

MAIDU NEIGHBORS

A monthly publication of the
Maidu Neighborhood Association

September 2025



Board of Directors

President:
Mary Steele 916-759-0179

Vice Pres.:
Vicki Miller 916-765-4986

Treasurer:
Shirley Brown 916-955-1909

Secretary:
Lance Hibben 916-204-4839

RCONA Rep:
Jim Kidd 916-871-3574

Newsletter Editor
Scott Reid 916-529-0288

General Board Members:
Mary Hoff 916-223-7252
Melinda Shrader 916-747-7535
Moody Boulos 916-343-9572
Susie Williams

WatchMail Host:
Jim Kidd 916-871-3574
jkidd@hotmail.com

Web Master:
David Allen

For Emergencies: Call 9-1-1
Non-emergency number is
916-774-5000

Police Officer:
Darren Kato 916-871-3043
email: DKato@roseville.ca.us

Maidu Park and Open Space Cleanup Saturday, October 11th

On **Saturday, October 11th**, come to **Maidu Regional Park**, to the **pavilion** to the right as you enter from Rocky Ridge, and join neighbors for our annual Park and Open Space Clean-up event. The event begins at **10 a.m.** and ends after a noon lunch and small award ceremony. This is the last newsletter before the event, so please make note of it now if you are interested.

Between 10 and noon we fan out across the undeveloped Park areas and beyond to neighborhood Open Spaces to pick-up trash. Volunteers pick the area they want to patrol. At noon we return to the pavilion where a light lunch will be served to all helpers. We invite people to show-off the most interesting piece of trash they've found. Judges will award small prizes to the volunteers with the most interesting trash (judges' opinions are final).

This outing is for people of all ages, so bring family and friends. The City will provide the trash bags and do the ultimate pick-up of what we find. You supply your efforts, and come dressed to wander on the uneven ground and brushy areas, ready to pick-up items. Fortunately, the goats have already cut down most of the high grasses. You may want to bring work gloves. Join us for our effort to keep things clean for all!

Upcoming MNA Board Election

At our October meeting, Tuesday the 28th, we will have our general election of Board members. If you are interested in being a Board member, email us at the address of at the bottom of the first page, or attend one of our meetings. If you want to know more about being a Board member, come to one of our meetings, or call a Board member listed on the first page and ask about it.

During the Board election, any one living within the boundaries of the Neighborhood Association is allowed to vote. Once the vote is finalized, the Board members will appoint the Board officers and other positions. The Board members transact the business of the Association throughout the rest of the year.

We will announce the final slate in our next newsletter.

Our Local Firehouse's Open House October 4th

On designated dates throughout the year the community is invited to tour a City fire station, meet local firefighters, and get an up-close look at our fire engines. These events are free and great fun for the whole family. *(Continued bottom p. 3)*

Our next Maidu meeting will be on **Tuesday, September 23rd at 6:30 p.m.** During the school year, except December, we meet at the **Sargeant School Multi-purpose Room** which is **to the left side of the front of the school on the Ridgecrest side.** Join us for a police report and catch up on neighborhood goings-on..

*The Maidu Neighborhood Association (MNA) is a member of the Roseville Coalition of Neighborhood Associations (RCONA). Search for **Maidu N.A.** on Facebook and "like" us. Feedback or Questions? Email us at [feedback\(at\)maiduna.com](mailto:feedback(at)maiduna.com).
Our web site is mna.rcona.com.*

Trash Talk

By Shirley Brown

In August I had the opportunity with a few Maidu NA Board Members to tour the Western Placer Waste Management Authority's Materials Recovery Facility (MRF) in Lincoln, CA. You may be scratching your head. "What is MRF?"



The floor where garbage trucks back in and dump what they have collected from our bins and dumpsters around the City.

A Material Recovery Facility is a specialized plant that receives collected garbage and sorts it into specific materials like paper, plastic, glass, metal, textiles and prepares them for sale to manufacturers who turn them into new products. The MRF uses a combination of manual labor, mechanical equipment (such as conveyor belts, magnets, eddy current separators and air classifiers) and advanced technologies like optical sorters to separate the recyclable items from non-recyclable waste. The ultimate goal of the MRF is to recover valuable resources, reduce the amount of waste sent to the landfill, and support environmental sustainability.

In Roseville, all our household garbage is collected in our gray or black bins and trucked to the MRF. Every day there is a continuous stream of garbage trucks arriving and dumping waste onto the floor of the MRF. All waste comes to the MRF; i.e., construction waste, hazardous waste, cardboard waste, restaurant waste, household waste, etc.

On our tour, I learned that trash has value. Trash is not waste; it is a resource. All garbage goes through the sorting process. Metals, paper, plastic, textiles, etc., are removed, cleaned, bundled, and sold. Anything of value is removed and kept out of the landfill. Carpet gets recycled; paint gets recycled, CDs & DVDs get recycled; clothing gets recycled. Whatever is left

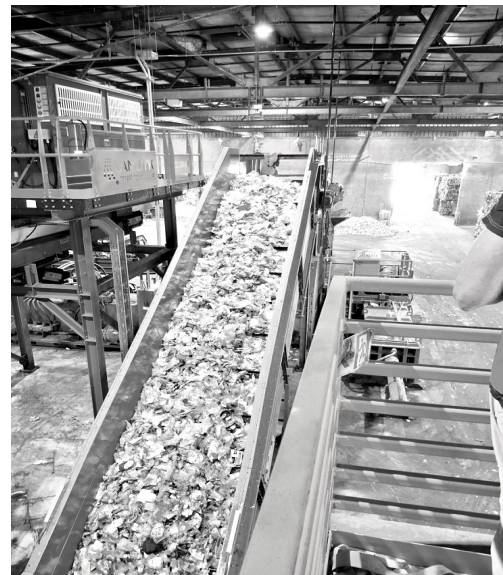
after all the sorting goes into the landfill.

In the future, recycling companies will be on the Lincoln property so the MRF doesn't have to ship recyclables out. Several companies are now in the planning stage of locating on the property as recycling businesses.

You may want to know what happens to the green waste that comes into the MRF. Green waste is taken and processed into compost that is then made available for purchase.

Another resource that's available for use is the gas that's produced by decomposing material at the landfill. There is a beneficial use for landfill gas. Methane gas is sucked up from the landfill and sent to laboratory where it is converted into energy.

I'm sure you will have more questions as this article only provides a brief overview. May I encourage you to take your own tour of the MRF? You will be surprised at the scale of this facility and the technology, engineering, and science that all comes together to handle the two million pounds of garbage that comes into the facility daily.



After sorting, this conveyor belt carries plastics to be recycled.

To find out how you can sign up for your own tour, check out the MRF website: wpwma.ca.gov/tours/. You must be over the age of 16 to take the tour. You will be pleasantly surprised by the efficiency and sophistication of the MRF.

New Roseville Dog Park with a Special Connection

By Lance Hibben

The City of Roseville has established a long-standing tradition of naming our dog parks in honor of our Police K-9 officers, starting with Bear Dog Park and Marco Dog Park (Note: Marco is closest to the Maidu neighborhood on Sierra Gardens north of Douglas Blvd.). This naming tradition serves as a fitting tribute to the service and sacrifice of our K-9s.

On August 16, 2025, the Director and staff of Roseville’s Parks and Recreation Department joined by current and former Police Department officers unveiled and celebrated four new dog parks. These new parks are named after former Roseville Police K-9 officers Arno, Zig, Eivo, and Fargo. Arno has a special connection with the Maidu neighborhood.

Arno and his human police partner Cal Walstad were assigned to Police Beat #2 which includes Maidu neighborhood. Cal was a very popular officer in our neighborhood during his tenure before being promoted to other assignments. Cal also organized Police Dog Olympics hosted at Maidu Park in which Police Dogs representing law enforcement agencies throughout the western states competed in agility and skills.

At the opening ceremonies at Arno Dog Park, Cal provided crowd pleasing stories of his partnership with Arno. For example, Cal had expected his future canine officer to be a certain breed and size. Arno was not what Cal expected and when the two first met, Arno bit Cal which started a great partnership. Arno was a long-haired German Shepherd from Czechoslovakia weighing in about 100 pounds. In addition to his regular responsibilities, Arno also had a natural talent for specialized training such as tracking (which numerous suspects discovered the hard way). Arno eventually retired from the Police Department in 2008 and spent the rest of his life with Cal and his family.

Arno Dog Park is located within Campus Oaks Park at 580 Roseville Parkway. The park offers numerous amenities while Arno Dog Park features a fenced off-leash facility separated for large and small dog breeds.



Cal Walstad with K-9 Officer Arno from a 1999 “baseball card” distributed by the Roseville Police Department

Our Local Firehouse’s Open House October 4th (cont. from front page)

One of the next such Open Houses will be at Fire Station Number 4, the one between Johnson Ranch Road and Eureka Road, right in our neighborhood. The details on this open house have not been formally announced as we go to press, but past open houses have been scheduled on Saturdays (as this one is) from 9 a.m. to 11 a.m. As October 4th gets closer, you can confirm the details on the City’s website. Family members of all ages are welcome.

Our Events—Our Association has developed a tradition of having the following events. We set the dates for each one as the time approaches to match the availability of the people who will help put them on, but they usually don’t vary by more than a few weeks from year to year.

- April or May—*Neighborhood Garage Sale*
- August—*National Night Out*
- October 11th—*Park Clean-up*
- December—*Santa in the Neighborhood*

For More Information

Go to mna.rcona.com/2025-links. Or scan this QR code with a suitable app. There are links there to more story info and to our related sites including our Facebook page. Sometimes there are story updates as well as corrections as needed.

