

# MAIDU NEIGHBORS

A monthly publication of the  
Maidu Neighborhood Association

March 2026



## Board of Directors

**President:**

Mary Steele 916-759-0179

**Vice Pres.:**

Vicki Miller 916-765-4986

**Treasurer:**

Shirley Brown 916-955-1909

**Secretary:**

Lance Hibben 916-204-4839

**RCONA Rep:**

Jim Kidd 916-871-3574

**Newsletter Editor**

Scott Reid 916-529-0288

**General Board Members:**

Mary Hoff 916-223-7252

Melinda Shrader 916-747-7535

Moody Boulos 916-343-9572

Susie Williams

**WatchMail Host:**

Jim Kidd 916-871-3574

[jkidd@hotmail.com](mailto:jkidd@hotmail.com)

**Web Master:**

David Allen

**For Emergencies: Call 9-1-1**

Non-emergency Police number is  
916-774-5000

**Police Officer:**

Darren Kato 916-871-3043

email: [DKato@roseville.ca.us](mailto:DKato@roseville.ca.us)

## Spring Clean-up Dates; Volunteers Needed

Whatever you don't sell at the Neighborhood Garage Sale, you can offload at the annual Spring Clean-up, organized by the City of Roseville and the Roseville Coalition of Neighborhood Associations. Save yourself the cost and a trip to the dump by disposing of unwanted items at no cost at one of four locations. Spring Clean-up days are conveniently scheduled on Saturdays from 8 a.m. to 2 p.m. at the following locations:

- April 11: Bridgeway Church, 8150 Industrial Avenue
- April 25: Bridgeway Church, 8150 Industrial Avenue
- May 9: St. John's Church, 2351 Pleasant Grove Blvd.
- May 30: Saugstad Park, 100 Buljan Drive (closest clean-up to our neighborhood)



Volunteers are needed for setup and tear down, to check IDs (the event is for Roseville residents only), direct cars to available bins, and assist residents with unloading, if necessary. Shifts are 7:30-10 a.m., 10 a.m.-12:30 p.m., 12:30-3 p.m.

To volunteer, use the QR code above or go to our web page at [mna.rcona.com](http://mna.rcona.com).

## May 2nd Garage Sale: Great Bargains, Hidden Gems

*By Connie Arkus*

Are you following Marie Kondo's decluttering advice and only keeping items that "spark joy"? Or have you found so much joy that your house is busting at the seams? Time to spring clean and share your happiness at the annual Maidu Neighborhood Garage Sale.

For \$10, we promote the event, and helium-filled balloons will be available to attract people to your bounty. As an added plus, local realtor, Melinda Shrader, will again provide a garage sale kit that includes sticker dots for pricing and hints for success. We will include you on our map so bargain hunters can find your house. You'll also be eligible to win a raffle prize from area merchants.

The deadline to register and be included in the map is Tuesday, April 28, so fill out the form now before you forget, mail it to Mary Steele, and mark the date on all of your calendars.

## 2026 Maidu Neighborhood Garage Sale Registration

Name \_\_\_\_\_ Phone # \_\_\_\_\_

Street Address \_\_\_\_\_ E-mail \_\_\_\_\_

\_\_\_\_\_ \$10+ enclosed for the **May 2nd Garage Sale** which supports the Maidu Neighborhood Association events all year.

\_\_\_\_\_ I do not plan to participate, but I would like to donate \$ \_\_\_\_\_ to the Maidu Neighborhood Association.

\_\_\_\_\_ I would like to help with map distribution or filling of balloons the day of the sale.

\_\_\_\_\_ I would like to donate a participation prize. Each person or business donating will be acknowledged in this newsletter.

Make your check out to *Maidu Neighborhood Association*. Send form & check to Mary Steele, President, **1390 Cloverdale Circle**, Roseville, CA 95661, **by Tuesday, April 28th** to guarantee getting your address listed on the map.

Questions? Send email to [feedback\(at\)maiduna.com](mailto:feedback(at)maiduna.com)

## **Same Day as Garage Sale, May 2nd: RBGC Plant Sale at Maidu**

*By Ann Beinhorn, RBGC Board Member*



Gardeners of all types attend Plant Sale.

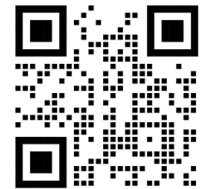
Add a stop to the Roseville Better Gardens Club (RBGC) Plant Sale Fundraiser as you enjoy visiting the garage sales for our neighborhood. The Plant Sale is located at the Maidu Community Center (entrance sidewalk), 1550 Maidu Dr. from 10AM-2PM.

RBGC is a 501(c)3 non-profit club. Our plant sale offers a wide selection of perennial and annual plants, flowers, bulbs, trees, vegetables, and delicious baked goods. Proceeds from the fundraiser will go towards our Scholarship Program, Community Grants for non-profits, and Educational Programs.

## **Fast Facts About Western Placer Waste Management Authority (WPWMA)**

In 1978 Lincoln, Rocklin, and Roseville joined Placer county to create the WPWMA. It is a leader at taking as much as possible of our trash and recycling it or reusing it. It has meant our area always exceeds State regulations to do such things. Some "fast facts" about the WPWMA:

- Our Western Placer Materials Recovery Facility (MRF) receives **2 Million pounds** of garbage daily. It is the largest in Northern California.
- The state-of-the-art Construction and Demolition Facility recycling facility is where waste from our growing region's construction projects goes for proper recycling.
- The WPWMA produces more than **65,000 tons** of compost every year by recycling organic waste from West Placer. The water that is used in the composting operation is drained in a pond and then reused to produce more compost.
- The Landfill Gas-to-Energy Plant converts gas into electricity, eliminating harmful methane gas and producing enough electricity to power **10,000 homes** a year.



Go to [www.WPWMA.ca.gov](http://www.WPWMA.ca.gov) to schedule a tour of this amazing campus with so much going on. To see a video on how the MRF sorts and recycles, use the QR code. The video is a couple years old and the facility has finished upgrades since, but it still shows how it all works in less than five minutes.

## **RCONA 'Sweet Celebration' Recognizes Volunteers**

Our parent organization, the Roseville Coalition of Neighborhood Associations (RCONA) is having a fundraising event Thursday, April 16th, 6-9 p.m. at Johnson Hall at TheGrounds. As they describe it, "RCONA's 2nd annual Sweet Celebrations honors the incredible volunteers who help make Roseville a great place to live. Guests can enjoy finger foods and sweet treats from more than a dozen local businesses, plus browse a variety of silent auction items."



Treats at 2025 'Sweet Celebration'

If you are interested in attending, tickets are \$35. See [rcona.org](http://rcona.org).

Our next Maidu meeting will be on **Tuesday, March 24th at 6:30 p.m.** During the school year, except December, we meet at the **Sargeant School Multi-purpose Room** which is **to the left side of the front of the school on the Ridgcrest side..** Join us for a police report and catch up on neighborhood goings-on.

*The Maidu Neighborhood Association (MNA) is a member of the Roseville Coalition of Neighborhood Associations (RCONA). Search for **Maidu N.A.** on Facebook and "like" us. Feedback or Questions? Email us at [feedback\(at\)maiduna.com](mailto:feedback(at)maiduna.com). Our web site is [mna.rcona.com](http://mna.rcona.com).*



## Celebrate Spring with these Local Events

By Connie Arkus

### **Roseville Earth Night, Thursday, April 16**

The City of Roseville conducts an annual Earth Night community event to celebrate the Earth and promote conservation strategies. This year it will be held April 16, from 5 to 8 p.m. at the Woodcreek Golf Club driving range, with live music, food, games, and conservation tips.

### **Yoomén: A Celebration of Spring, April 25, 9 a.m. to 3 p.m.**

Maidu Museum and Historic site will celebrate “Yoomén, the coming of spring, a welcome time of new growth, and the guarantee of fresh foods and warmer weather. The cultural event features Native American dancers, performers and cultural demonstrators who will showcase their skills working with natural materials to create baskets, jewelry, tools and more! The local Native artist community will also have artwork on view in the museum, and crafts and other goods will be sold by Native artisans. Native-inspired art and game stations for children and guided tours of the museum and site will also be available, including tours of the site’s famous ancient petroglyphs.”

### **Garden Gab: Ask an Expert, April 30 and May 2, 9 a.m.–12 p.m.**

The Roseville Utility Exploration Center offers many gardening programs at no cost. “Curious about pests, pruning, soil, irrigation, or landscape design—all in one spot? Join us at the Inspiration Garden and chat with local gardening experts. Get personalized advice from the City of Roseville’s Water Efficiency team and Placer County Master Gardeners.” The Inspiration Garden is located at 1501 Pleasant Grove Blvd., next to the Martha Riley Community Library.

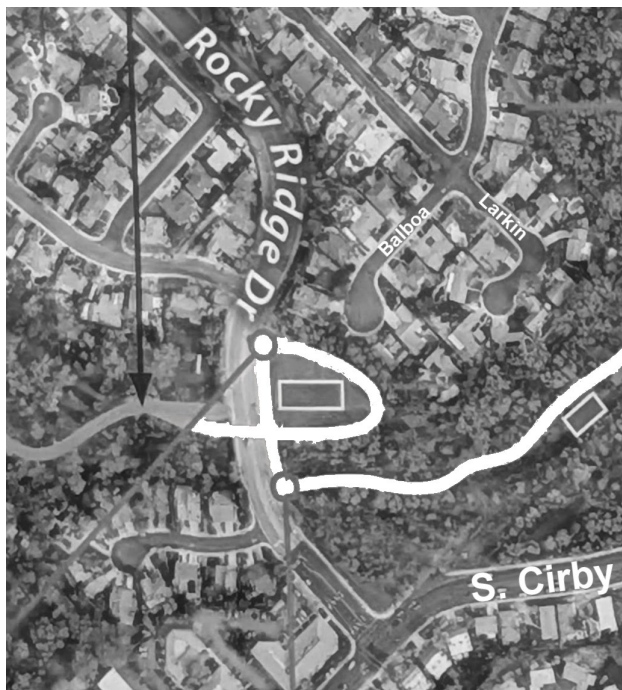
## Looking at Multi-Use Trail Route Through Our Neighborhood, Part 1

In this newsletter and the ones ahead, we’ll take a detailed look at the multi-use (walking, running, biking) trail as it will go through our neighborhood. The first section is “the loop” (our name for it).

The white line in the picture at the right traces this trail section. The trail will pass, from the left, under Rocky Ridge, then into the open field on the north side of the creek (near the dead end of Balboa Dr.). Then it does a big “U” or loop, increasing in elevation until it reaches the sidewalk on the east side of Rocky Ridge. From there it goes on the sidewalk south across the creek bridge, then turns east in the open space along the south side of the creek.

The rectangle marked the middle of the loop is labeled as “Landscaping” (not defined) by the City. The other, smaller rectangle at the right edge of the photo is labeled as “Benches and Amenities”.

Amenities could include, we were told, a trash can.



Next month: *Two Bridges*

**Our Events**—Our Association has developed a tradition of having the following events. We set the dates for each one as the time approaches to match the availability of the people who will help put them on, but they usually don’t vary by more than a few weeks from year to year.

- May 2nd—*Neighborhood Garage Sale*
- August—*National Night Out*
- October—*Park Clean-up*
- December—*Santa in the Neighborhood*

### **For More Information**

Go to [mna.rcona.com](http://mna.rcona.com). Or scan this QR code with a suitable app. There are links there to more story info and to our related sites including our Facebook page. Sometimes there are story updates as well as corrections as needed.

