

# MAIDU NEIGHBORS

A monthly publication of the  
Maidu Neighborhood Association

June 2026



## Board of Directors

**President:**  
Mary Steele 916-759-0179

**Vice Pres.:**  
Vicki Miller 916-765-4986

**Treasurer:**  
Shirley Brown 916-955-1909

**Secretary:**  
Lance Hibben 916-204-4839

**RCONA Rep:**  
Jim Kidd 916-871-3574

**Newsletter Editor**  
Scott Reid 916-529-0288

**General Board Members:**  
Mary Hoff 916-223-7252  
Melinda Shrader 916-747-7535  
Moody Boulos 916-343-9572  
Susie Williams

**WatchMail Host:**  
Jim Kidd 916-871-3574  
jkidd@hotmail.com

**Web Master:**  
David Allen

**For Emergencies: Call 9-1-1**  
Non-emergency number is  
916-774-5000

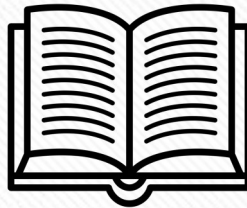
**Police Officer:**  
Darren Kato 916-871-3043  
email: DKato@roseville.ca.us

## Free Pancake Breakfast, Saturday June 20

If Saturday, June 20th, the day before Father's Day, hasn't come and gone by the time you read this, please do come for a free pancake breakfast between 8:30 a.m. to 10:30 a.m. in Maidu Park by the pavilion, basketball courts, and old batting cages. We'll have pancakes, toppings including fruit and syrup, and beverages. Drop in as you can!



## Vote on Bylaws Amendments; June Meeting at Round Table



At the June 23 meeting, Maidu neighbors age 18 years or older (one per household) may vote on adopting revisions to the Maidu Neighborhood Association's bylaws. Changes will be made to bring Maidu bylaws into alignment with our parent organization, the Roseville Coalition of Neighborhood Associations. To review the proposed changes, visit our website at [mna.rcona.com](http://mna.rcona.com).

Since school is out for the summer, the next meeting will be held on June 23 at 6:30 p.m. in the meeting room at the Roundtable Pizza Restaurant, 8755 Sierra College Blvd. *Sorry, pizza not included.*

## What is "Maidu Mustangs"?

Many Maidu Neighborhood residents enjoy the responsibilities of owning classic cars. Many of these vintage cars are Ford Mustangs or associated makes and models like Shelbys and Cobras. This article seeks to get feedback from classic car owners who live in the Maidu Neighborhood and have an interest in sharing your car by bringing it to neighborhood events such as the upcoming National Night Out at Maidu Park on Tuesday, August 4th.

In addition, a fellowship of owners typically provides benefits such as sharing ideas, problem solving, and the enjoyment of driving their classic cars to local destinations together. "Maidu Mustangs" is not intended to be a car club, just a way for neighbors to share common interests with each other and share the fruits of our efforts at neighborhood events. If you own (or know someone who owns) a Mustang, Shelby, Cobra, or other related classic vehicle (regardless of condition) and are interested in the above, please contact Lance Hibben at 916-204-4839 by July 1st.

Our next Maidu meeting will be on **Tuesday, June 23rd at 6:30 p.m.** Since school is out, our summer meetings (June, July, August) locations will vary.. In June we will be meeting at the Round Table Pizza's location at 8755 Sierra College Blvd, at 6:30 p.m. Join us for a police report and catch up on neighborhood goings-on.

*The Maidu Neighborhood Association (MNA) is a member of the Roseville Coalition of Neighborhood Associations (RCONA). Search for **Maidu N.A.** on Facebook and "like" us. Feedback or Questions? Email us at [feedback\(at\)maiduna.com](mailto:feedback(at)maiduna.com).*

*Our web site is [mna.rcona.com](http://mna.rcona.com).*



## **Don't Bark Up the Wrong Tree! Consult With RUFF**

*By Connie Arkus*

Do you need help selecting a tree, planting a tree, pruning a tree or just general advice on tree care? Or maybe you want to help plant trees in your community. Check out the Roseville Urban Forest Foundation (RUFF) website at [rosevilletree.org](http://rosevilletree.org), where you'll find information on enhancing curb appeal and improving the environment with trees.

“Over the past two decades, RUFF, in partnership with the city of Roseville’s Open Space division and community volunteers, has planted and cared for more than 800 California native trees in Maidu Park



and more than 150 such trees in the open space bordering West Colonial Parkway, along with many other areas in Roseville,” said RUFF Board Member David Allen.

“While Roseville has many beautiful trees, we can always use more,” Allen added.

RUFF, a non-profit organization, has supported the expansion and care of Roseville’s tree canopy for more than 30 years. In addition to planting native trees in parks and open spaces, it supports Roseville Electric Utility’s Shade Tree

This image shows all the trees ever planted by RUFF in the eastern, non-developed part of Maidu Park. Each dot represents a tree. These represent about 10 different planting events that have been held over the years, often with volunteer help by neighbors. Not all of the trees planted have survived—this area, about 1 in 5 died before getting established.

program with free

consultations to homeowners, donates hundreds of books to Roseville elementary schools each year. It educates the public about the care and benefits of trees on its website, at community events, such as Utility Exploration Center workshops and presentations to interested groups.

RUFF partners with the City of Roseville, California Dept. of Forestry and Fire Protection, California ReLEAF, Sacramento Tree Foundation, and Dry Creek Conservancy. The Maidu Neighborhood Association, recognizing the nearly 1,000 trees that have been planted by RUFF volunteers in our neighborhood over the years, decided at the May meeting to donate \$250 to RUFF.

## **Help Us Keep Costs Down and Increase Fun—Donate Lawn Games!**

The Maidu Neighborhood Association is looking for slightly used (or new) family yard games that we can use at National Night Out and other upcoming events at Maidu Regional Park. Top on our wish list are: cornhole, KerPlunk, ring toss, Yard Pong, and Toss and Catch (with Velcro), but we’re open to other games as long as they’re safe for kids. (No darts, please.) Call any board member on the cover of this newsletter if you have an item or two to donate. Thank you!

## **On Our Radar**

*By Connie Arkus*

### **Summer Fun!**

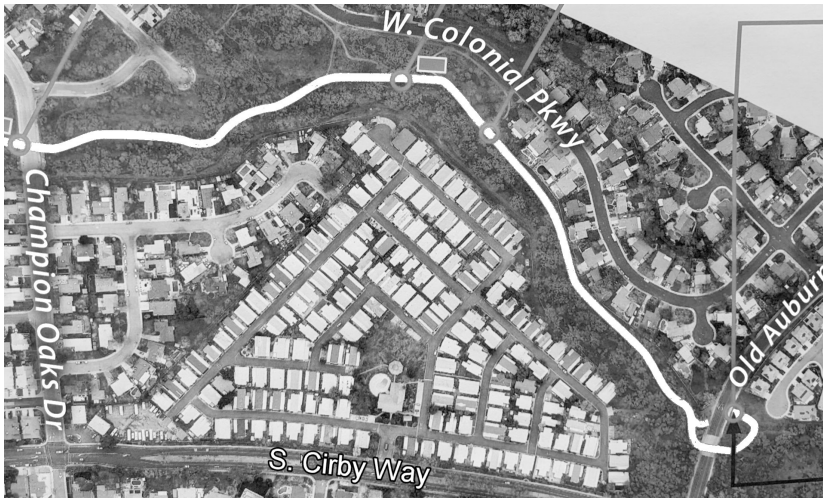
Be sure to visit the City of Roseville website at [www.roseville.ca.gov](http://www.roseville.ca.gov) to download the June-August issue of Experience PRL (parks, recreation and libraries). Check out summer programs for children, teens and adults.

### **Maidu Museum and Historic Site**

- *July 25*  
Campfire: Listen to Indigenous stories that use animals as teachers to convey moral lessons, cultural values, and a deep respect for nature, such as the Coyote Trickster. Then roast marshmallows around a campfire—all at the outdoor amphitheater.
- *July 25*  
Rock Art Mysteries Tour: See the petroglyphs at night! Special lighting brings out carved details that are only visible in the dark. Learn the history of the unique artifacts on this historic site. Some petroglyphs are estimated to be between 5,000 and 10,000 old! The tour will begin after the Campfire.
- *Closes July 26*  
Raymond LeBeau: Field(s) of View is a solo exhibition by local Pit River, Lakota, and Cahuilla artist, Raymond LeBeau. It reflects his perspective as a Native Pit River artist shaped by his northeastern California homelands and coastal environments.

## **Looking at Dry Creek Trail Route Through Our Neighborhood, Part 4: To the end...for now**

The last section of the proposed multi-use trail will run from Champion Oaks, along the creek behind houses on W. Colonial, and ending at Old Auburn. Unlike at Champion Oaks where the trail crosses at street level, at Old Auburn it will go underneath at the existing bridge over the creek.



Access to the trail from this area will be at the open space area on W. Colonial, at either side of Old Auburn by the bridge, and at Champion Oaks.

In these 4 articles we've laid out the route of the trail that will connect with the part just completed across Rocky Ridge. If you want to know more, send us a message or call a board member with your questions.

### **Neighbor Ad:**

*Madison can see souls. Honestly, it's kind of gross.* Pick up local author Rebecca Chastain's humorous urban fantasy *A Fistful of Evil* set in Roseville. Get it at the Old Haunts Bookshop in Granite Bay.

**Our Events**—Our Association has developed a tradition of having the following events. We set the dates for each one as the time approaches to match the availability of the people who will help put them on, but they usually don't vary by more than a few weeks from year to year.

- April or May—*Neighborhood Garage Sale*
- June 20, 2026—*Pancake Breakfast*
- August 4, 2026—*National Night Out*
- October—*Park Clean-up*

### **For More Information**

Go to [mna.rcona.com](http://mna.rcona.com). Or scan this QR code with a suitable app. There are links there to more story info and to our related sites including our Facebook page. Sometimes there are story updates as well as corrections as needed.

